

Sizes

Small (Medium, Large, 1X, 2X). Instructions are for smallest size, with changes for other sizes noted in parentheses as necessary.

Finished Measurements

Bust (buttoned): 34 (37, 40, 44, 47 ½)"

Total length: 22 (22 ½, 22 ½, 23, 23)"

Materials

Cascade Yarn's *Lana d'Oro*, 5 (5, 6, 7, 8) hanks of #1034

One pair *each* of sizes 7 and 8 knitting needles or size needed to obtain gauge

One cable needle (cn)

Stitch markers

Three 1" buttons (JHB International's *Square Holes*, Style # 14396 was used on sample garment)

Gauge

In Reverse Stockinette St Patt with larger needles, 18 sts and 26 rows = 4";

Bud Panel with larger needles measures 2 ½" across. **To save time, take time to check gauge.**

Stitch Patterns

Twisted Rib Pattern (*mult 2 + 1 sts*)

Row 1 (RS): *P1, K next st *through back loop*. Repeat from * across, ending row with P1.

Row 2: *K1, P next st *through back loop*. Repeat from * across, ending row with K1.

Repeat Rows 1 and 2 for patt.

Reverse Stockinette St Pattern

Row 1 (RS): Purl across.

Row 2: Knit across.

Repeat Rows 1 and 2 for patt.

Bud Panel (*over 14 sts*)

See chart.

Back

With smaller needles, CO 83 (89, 97, 105, 113) sts.

Beg Twisted Rib Patt, and work even until piece measures approx 1 ½" from beg, ending after WS row.

Set Up Patts

Next Row (RS): Change to larger needles, Work Row 1 of Reverse Stockinette St Patt over first 12 (15, 19, 23, 27) sts, place marker, work Row 1 of Bud Panel over next 14 sts, place marker, work Row 1 of Reverse Stockinette St Patt over middle 31 sts, place marker, work Row 1 of Bud Panel over next 14 sts, place marker, work Row 1 of Reverse Stockinette St Patt over next 12 (15, 19, 23, 27) sts to end row.

Cont even in patts as established until piece measures approx 13" from beg, ending after WS row.

Shape Armholes

BO 4 (5, 6, 7, 8) sts at beg of next two rows, BO 2 (2, 3, 3, 4) sts at beg of next two rows, then dec 1 st each side every other row 1 (2, 5, 6, 8) times, then every fourth row 3 (3, 2, 2, 1) times—63 (65, 67, 69, 71) sts rem.

Cont even in patt until piece measures approx 20 ½ (21, 21, 21 ½, 21 ½)" from beg, ending after WS row.

Shape Neck

Next Row (RS): Work across first 17 (18, 19, 20, 21) sts, join second ball of yarn and BO middle 29 sts, work across to end row.

Dec 1 st each neck edge once—16 (17, 18, 19, 20) sts rem each side.

Cont even until piece measures approx 21 (21 ½, 21 ½, 22, 22)" from beg, ending after WS row.

Shape Shoulders

BO 5 (6, 6, 6, 7) sts at beg of next four rows, then BO 6 (5, 6, 7, 6) sts at beg of next two rows.

Left Front

With smaller needles, CO 39 (41, 45, 49, 53) sts.

Beg Twisted Rib Patt, and work even until piece measures approx 1 ½" from beg, ending after WS row, inc o (1, 1, 1, 1) st at end of last row—39 (42, 46, 50, 54) sts.

Set Up Patts

Next Row (RS): Change to larger needles, Work Row 1 of Reverse Stockinette St Patt over first 12 (15, 19, 23, 27) sts, place marker, work Row 1 of Bud Panel over next 14 sts, place marker, work Row 1 of Reverse Stockinette St Patt over next 13 sts to end row.

Cont even in patts as established until piece measures approx 13" from beg, ending after WS row.

Shape Armhole

BO 4 (5, 6, 7, 8) sts at armhole edge once, BO 2 (2, 3, 3, 4) sts at armhole edge once, then dec 1 st at armhole edge every other row 1 (2, 5, 6, 8) times, then every fourth row 3 (3, 2, 2, 1) times—29 (20, 31, 32, 33) sts rem.

Cont even in patt until piece measures approx 19 (19 ½, 19 ½, 20, 20)" from beg, ending after RS row.

Shape Neck

BO 4 sts at neck edge once, BO 3 sts at neck edge once, BO 2 sts at neck edge once, then dec 1 st at neck edge every row four times—16 (17, 18, 19, 20) sts rem.

Cont even until piece measures same as back to shoulders.

Shape Shoulders

BO 5 (6, 6, 6, 7) sts at shoulder edge twice—6 (5, 6, 7, 6) sts rem.

Work one row even.

BO.

Right Front

Same as left front *except* reverse all shaping.

Sleeves

With smaller needles, CO 45 (45, 45, 49, 49) sts.

Beg Twisted Rib Patt, and work even until piece measures approx 1 ½" from beg, ending after WS row, inc 1 st at end of last row—46 (46, 46, 50, 50) sts.

Set Up Patts

Next Row (RS): Change to larger needles, Work Row 1 of Reverse Stockinette St Patt over first 16 (16, 16, 18, 18) sts, place marker, work Row 1 of Bud Panel over next 14 sts, place marker, work Row 1 of Reverse Stockinette St Patt over next 16 (16, 16, 18, 18) sts to end row.

Cont patts as established, and inc 1 st each side every sixth row 0 (1, 0, 0, 0) times, every eighth row 0 (0, 8, 0, 6) times, every tenth row 5 (6, 0, 7, 1) times, then every twelfth row 1 (0, 0, 0, 1) time—58 (60, 62, 64, 66) sts.

Cont even until sleeve measures approx 12 ¼ (12 ¾, 13, 13 ¼, 13 ¼)" from beg, ending after WS row.

Shape Cap

BO 4 (5, 6, 7, 8) sts at beg of next two rows, then dec 1 st each side every fourth row 2 (3, 3, 5, 5) times, then every other row 12 (11, 11, 9, 9) times—22 sts rem.

Work 0 (1, 1, 1, 1) row even.

BO 2 sts at beg of next four rows—14 sts rem.

BO.

Finishing

Block pieces to measurements.

Sew shoulder seams.

Neckband

With smaller needles and RS facing, pick up and knit 89 sts along neck opening.

Beg Twisted Rib Patt, and work even until neckband measures approx 1 ½" from beg.

BO *loosely* in patt.

Buttonband

With RS facing and smaller needles, pick up and knit 101 (105, 105, 109, 109) sts along left front edge, including side of neckband.

Work rows of Garter St until band measures approx 1 ½" from beg. BO.

Place markers for three buttons along band, making the first ¼" from beg of front neck shaping and the last 12" from lower edge, and the other evenly-spaced in between them.

Buttonhole Band

With RS facing and smaller needles, pick up and knit 101 (105, 105, 109, 109) sts along right front edge, including side of neckband.

Work rows of Garter St until band measures approx ¾" from beg.

Next Row: Work buttonholes opposite markers by binding off 5 sts.

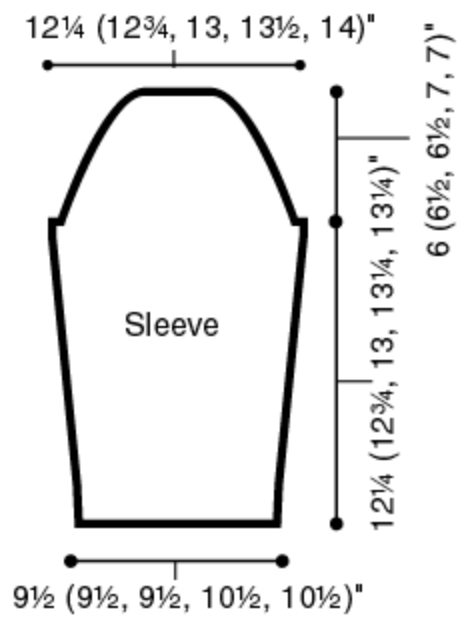
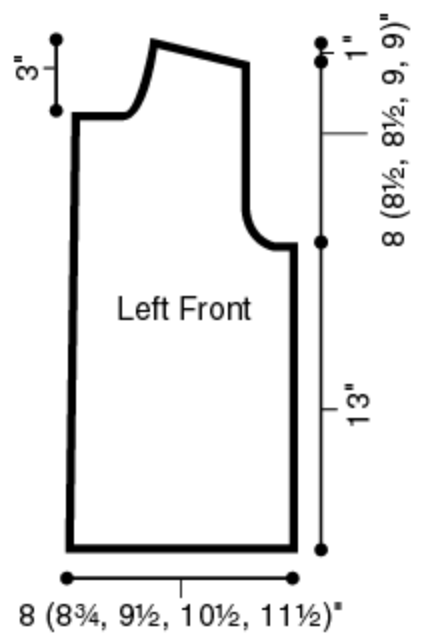
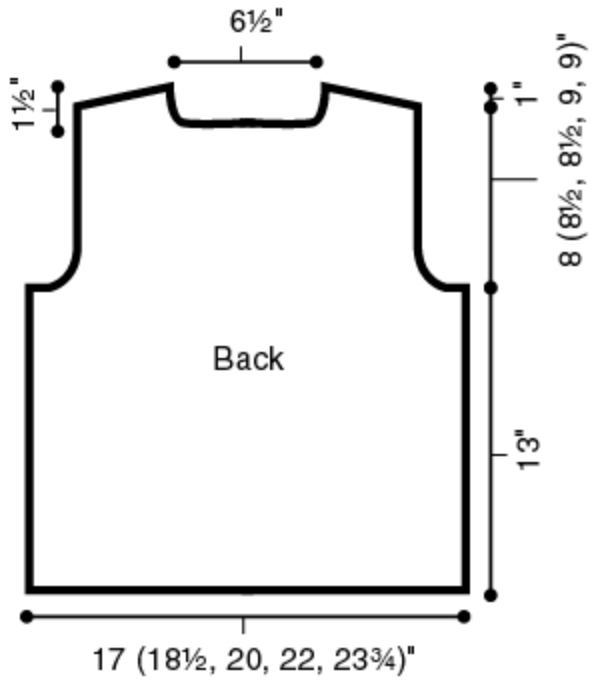
Next Row: Cont in Twisted Rib Patt, and CO 5 sts above the bound-off sts from previous row.

Complete same as buttonband.

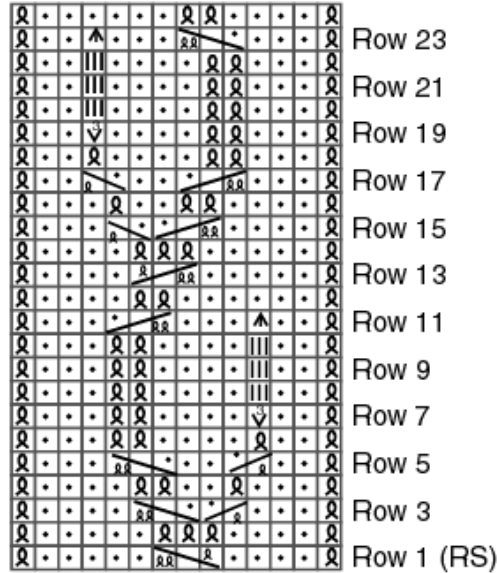
Set in sleeves.

Sew sleeve and side seams.

Sew on buttons.





Bud Panel
(14 sts)




KEY □ = K on RS; P on WS

• = P on RS; K on WS

 = Slip 2 sts onto cn and hold in front; K next st *through back loop*; K2 *through back loop* from cn

 = Slip 2 sts onto cn and hold in front; P1; K2 *through back loop* from cn


 = Slip next st onto cn and hold in back; K2 *through back loop*; P1 from cn


⌘ = K *through back loop* on RS; P *through back loop* on WS

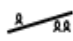
III = K3 on RS; P3 on WS

∨ = (Increases from 1 st to 3 sts) = Knit into (back, then front, then back) of next st

▲ = Slip 2 sts at once knitwise; K1; p2sso

 = Slip next st onto cn and hold in back; K next st *through back loop*; P1

 = Slip next st onto cn and hold in front; P1; K st from cn *through back loop*

 = Slip next st onto cn and hold in back; K next 2 sts *through back loop*; K1 *through back loop* from cn