

W229



Women's Fair Isle Pullover
Designed by Melissa Leapman



Woman's Fair Isle Pullover

Designed by Melissa Leapman for Cascade Yarns

Sizes

Small (Medium, Large, 1X, 2X, 3X). Instructions are for smallest size, with changes for other sizes noted in parentheses as necessary.

Finished Measurements

Bust: 35 (38, 41, 44 ½, 48, 51)"

Length: 24 (24 ½, 25, 25, 25 ½, 25 ½)"

Materials

- ◆ Cascade Yarn's *Superwash* 220, 1 (1, 2, 2, 3) hanks of #841 (A), 3 (4, 5, 5, 6) hanks of #882 (B), 1 (2, 2, 3, 3) hanks *each* of #886 (C) and #850 (D)
- ◆ One pair each of sizes 6 and 8 knitting needles or size needed to obtain gauge

Gauge

In Fair Isle Patt with larger needles, 20 sts and 20 rows = 4". **To save time, take time to check gauge.**

K1 P1 Rib Patt *(over mult. 2 sts)*

Row 1 (RS): *K1, P1. Repeat from * across.

Patt Row: As Row 1.

Stockinette St Patt *(over any number of sts)*

Row 1 (RS): Knit across.

Row 2: Purl across.

Repeat Rows 1 and 2 for patt.

Fair Isle Patt

See chart.

Back

With smaller needles and A, CO 86 (94, 102, 110, 118, 126) sts.

Change to B, beg K1 P1 Rib Patt, and work even until piece measures approx 3" from beg, ending after WS row, inc 1 st at beg of last row—87 (95, 103, 111, 119, 127) sts.

Change to larger needles, beg Fair Isle Patt in Stockinette St, and work even until piece measures approx 14 ½" from beg, ending after WS row.

Shape Armholes

BO 9 (12, 15, 18, 21, 23) sts at beg of next two rows—69 (71, 73, 75, 77, 81) sts rem.

Cont even until piece measures approx 22 ½ (23, 23 ½, 23 ½, 24, 24)" from beg, ending after WS row.

Shape Neck

Next Row (RS): Work across first 18 (19, 20, 21, 22, 24) sts, join second ball of yarn and BO middle 33 sts, work to end row.

Work both sides at once with separate balls of yarn and dec 1 st each neck edge once—17 (18, 19, 20, 21, 23) sts rem each side.

Cont even until piece measures approx 23 (23 ½, 24, 24, 24 ½, 24 ½)" from beg, ending after WS row.

Shape Shoulders

BO 6 (6, 6, 7, 7, 8) sts at beg of next four rows, then BO 5 (6, 7, 6, 7, 7) sts at beg of next two rows.

Front

Same as back until piece measures approx 21 (21 ½, 22, 22, 22 ½, 22 ½)" from beg, ending after WS row.

Shape Neck

Next Row (RS): Work across first 28 (29, 30, 31, 32, 34) sts; join second ball of yarn and BO middle 13 sts, cont patt as established to end row.

Work both sides at once with separate balls of yarn, and BO 5 sts each neck edge once, BO 3 sts each neck edge once, then dec 1 st each neck edge every row three times—17 (18, 19, 20, 21, 23) sts rem each side.

Cont even until piece measures same as back to shoulders, ending after WS row.

Shape Shoulders

Same as back.

Sleeves

With smaller needles and A, CO 50 sts.

Change to B, beg K1 P1 Rib Patt, and work even until piece measures approx 2" from beg, ending after WS row, inc 5 sts evenly across last row—55 sts.

Change to larger needles, beg Fair Isle Patt in Stockinette St, and inc 1 st each side every other row 0 (0, 0, 0, 8, 9) times, every fourth row 1 (12, 19, 20, 15, 14) times, then every sixth row 14 (6, 1, 0, 0, 0) times, working new sts into patt as they accumulate—85 (91, 95, 95, 101, 101) sts.

Cont even until piece measures approx 21 ½ (21 ½, 21 ½, 21 ½, 21 ¾, 21 ½)" from beg, ending after WS row.

BO.

Finishing

Sew left shoulder seam.

Neckband

With RS facing, smaller needles, and B, pick up and knit 98 sts around neckline.

Next Row (WS): *K1, P1. Repeat from * across.

Repeat last row until band measures approx 1" from beg.

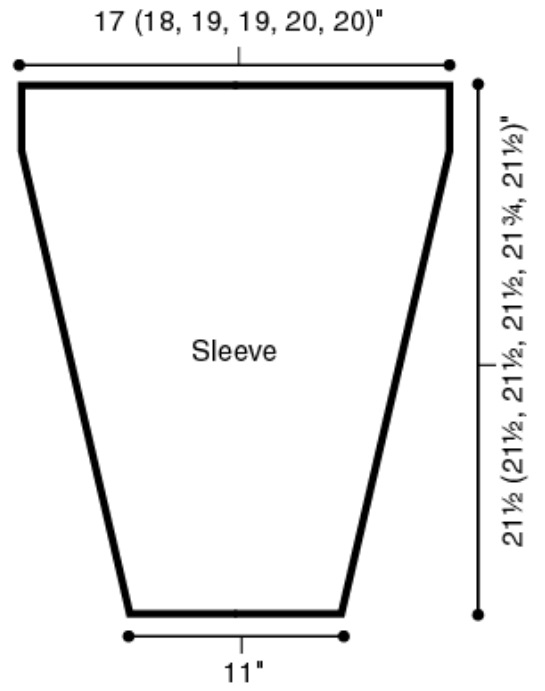
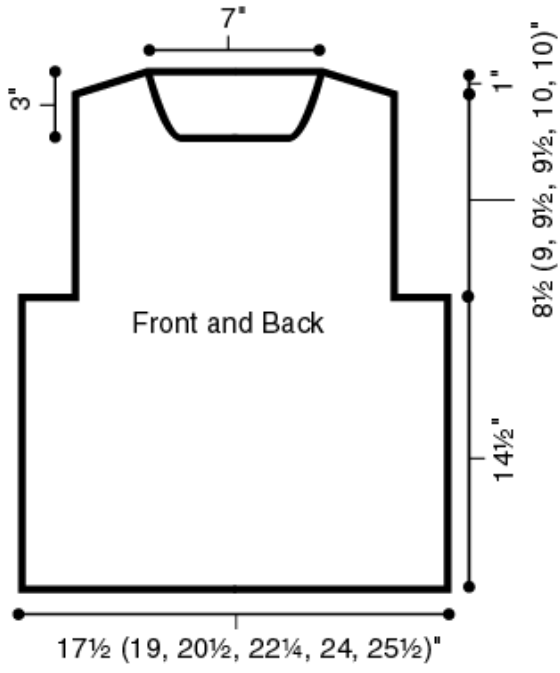
Change to A, work one more row of rib.

Next Row: BO in patt.

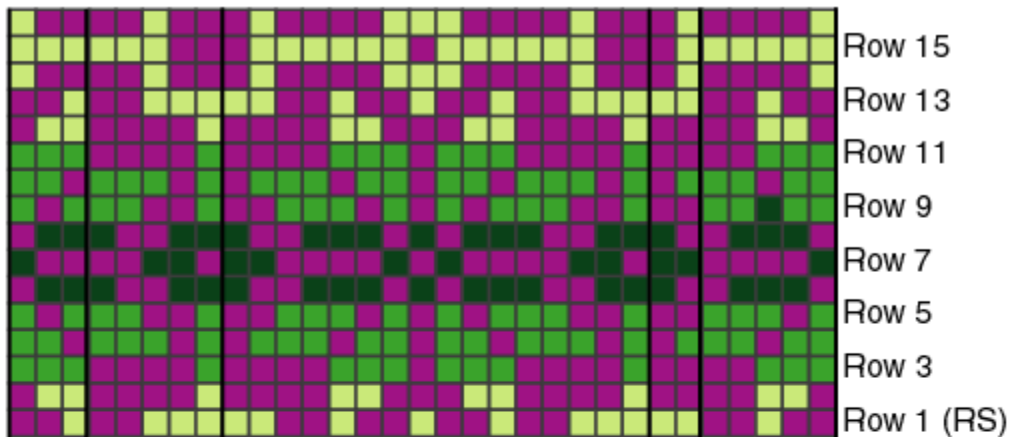
Sew right shoulder seam, including side of neckband.

Set in sleeves.

Sew sleeve and side seams.



Fair Isle Pattern



← 16-st repeat →

Beg S, L, and 2X Front and Back
Beg Row 1 for All Sleeves

End S, L, and 2X Front and Back
End Row 1 for All Sleeves

End M, 1X, and 3X Front and Back

Beg M, 1X, and 3X Front and Back

Color Key ■ = A

■ = B

■ = C

■ = D

Stitch Key □ = K on RS; P on WS